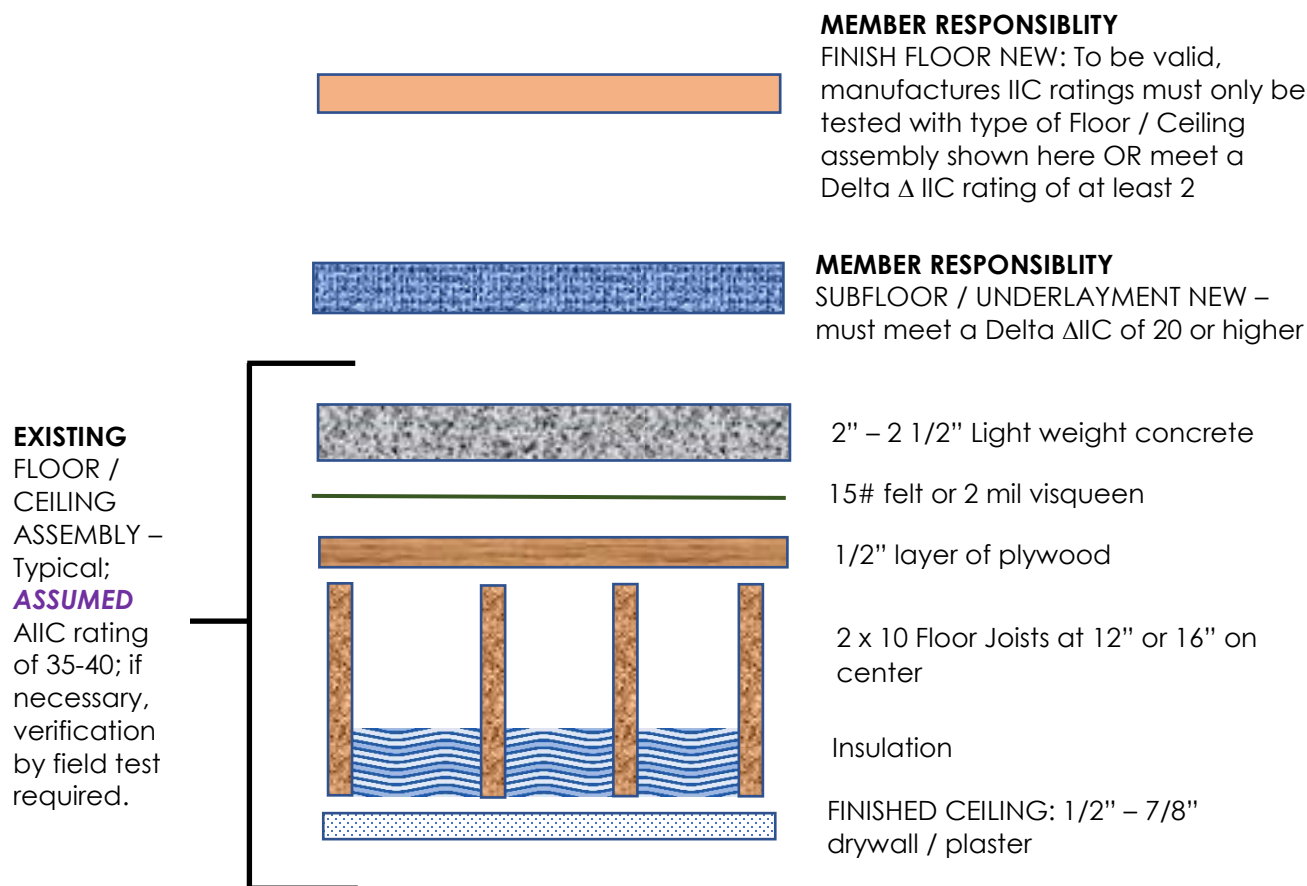


FLOOR / CEILING ASSEMBLY CROSS SECTION

Showing a breakdown of materials/components
Needed to achieve an OVERALL AIIc rating of 57



Summary Example:

1. **MEMBER RESPONSIBILITY: Finish Flooring – new component**
Depending on verification of existing floor / ceiling assembly, all new flooring will be required to meet a minimum IIC rating - **by itself** - or delta Δ IIC rating of: at least 2
 2. **MEMBER RESPONSIBILITY Subfloor underlayment – new component**
All subfloor underlayments are required to meet a minimum delta Δ IIC rating of: 20
 3. **EXISTING: Floor / Ceiling Assembly**
AIIc rating is assumed but unverified.
This standard is based on these existing components having an AIIc rating range of: 35-40
- AIIc Totals 57 min.

Note: Members may wish to verify existing conditions by testing prior to installation of new flooring. If when tested, the floor / ceiling assembly is less than assumed above, the difference will need to be made up with underlayments and or finish flooring products.