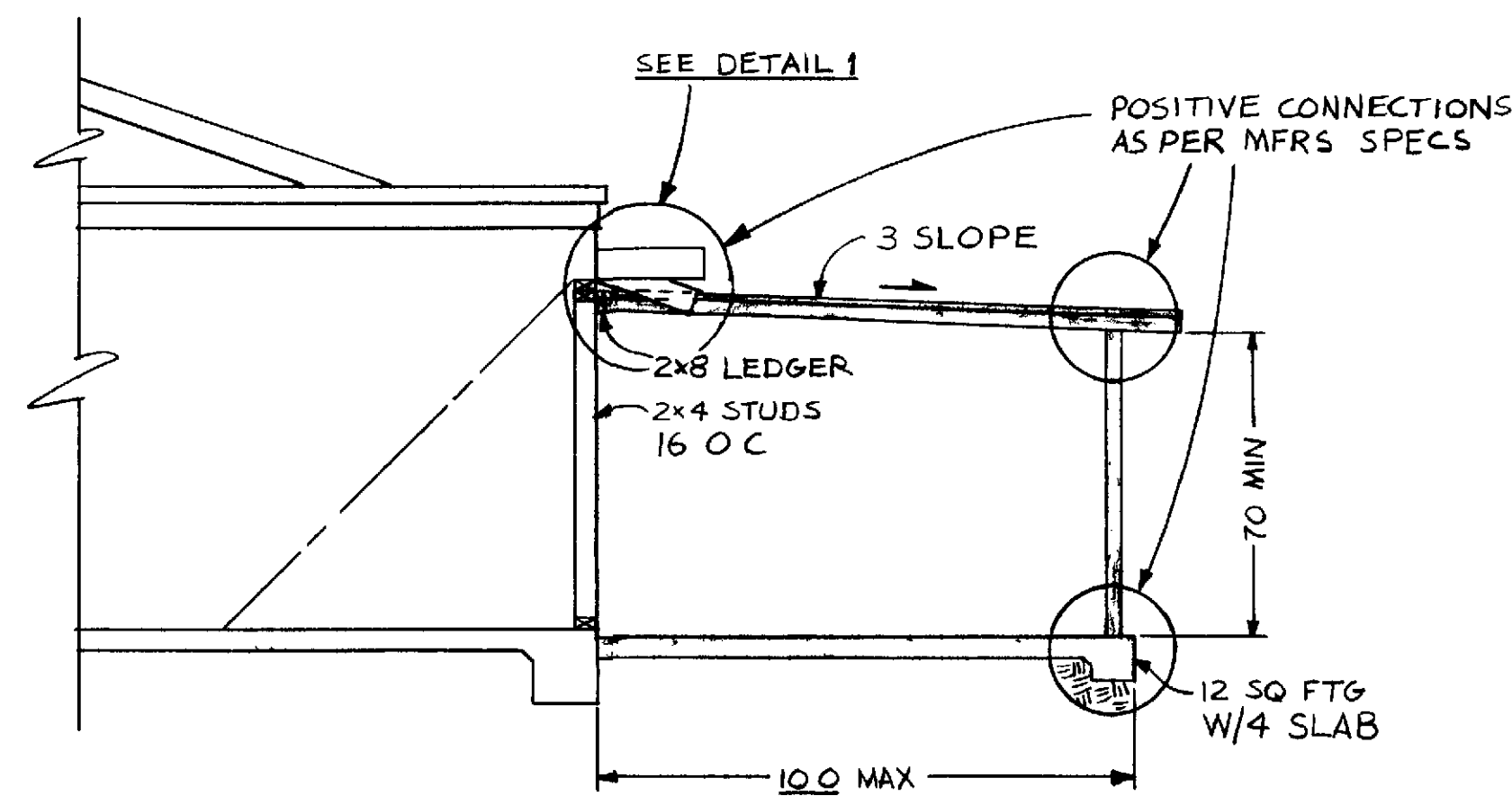
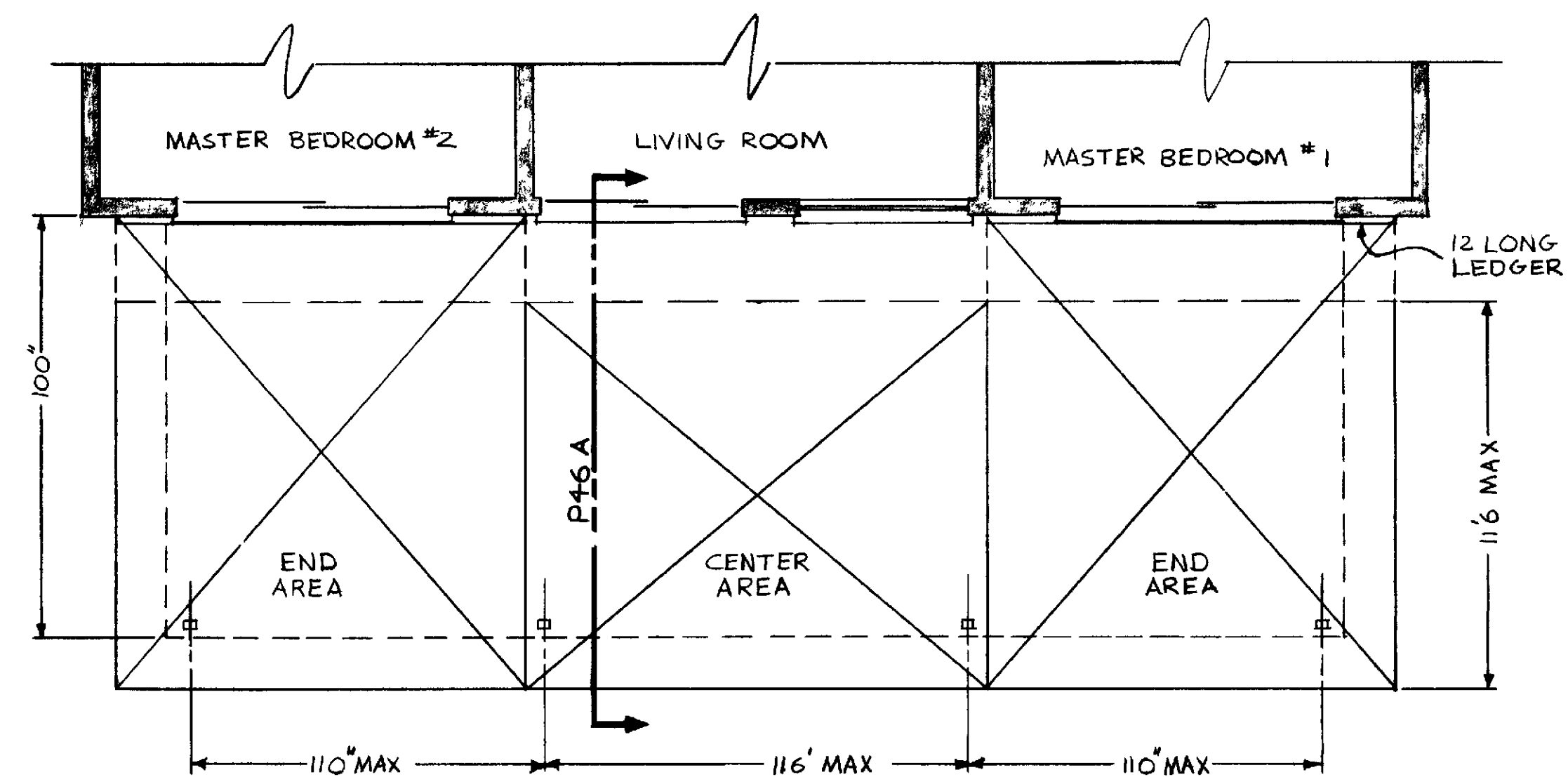


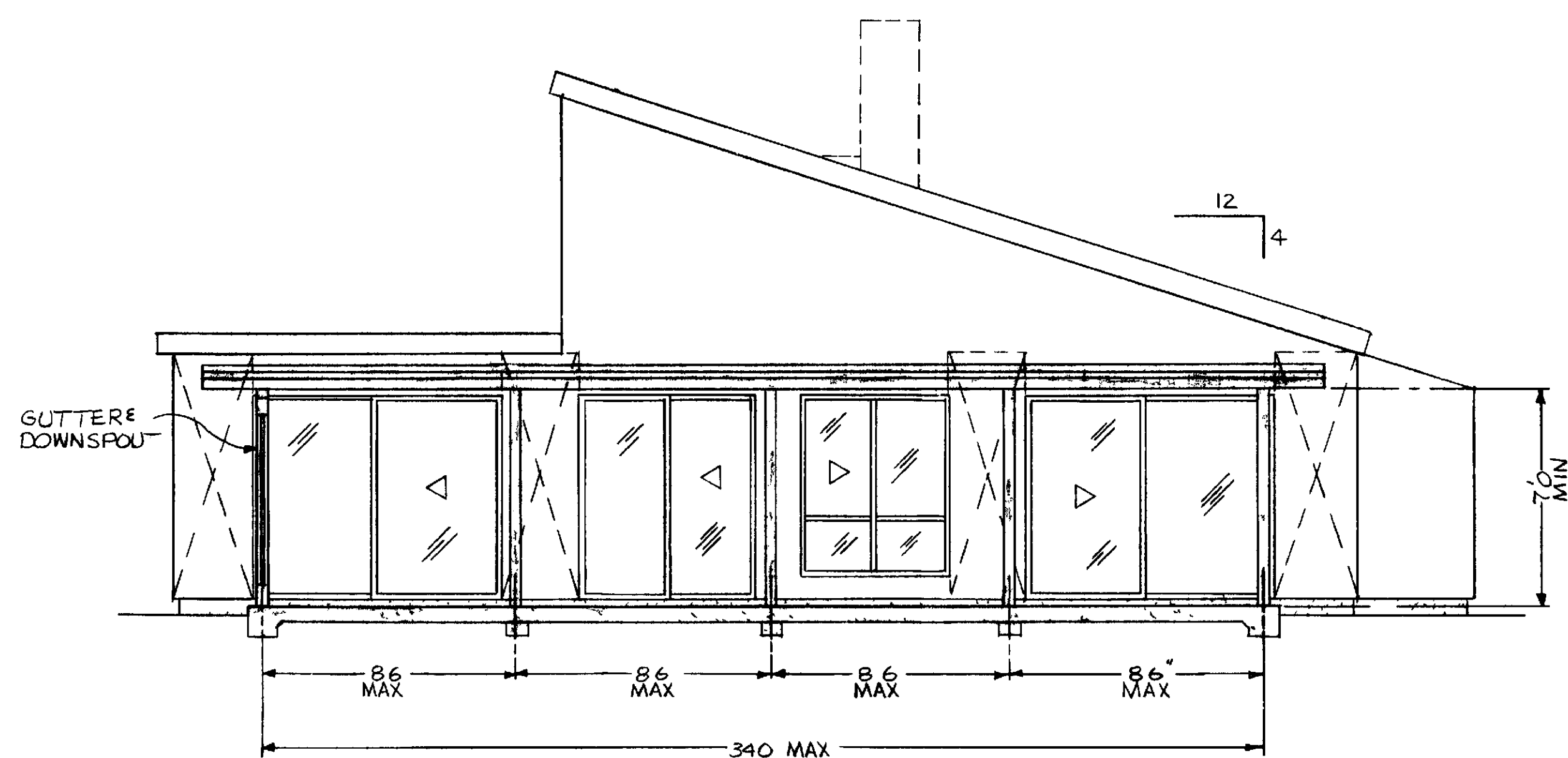
REAR ELEVATION PLAN 46A  
SCALE 1/4" = 10'



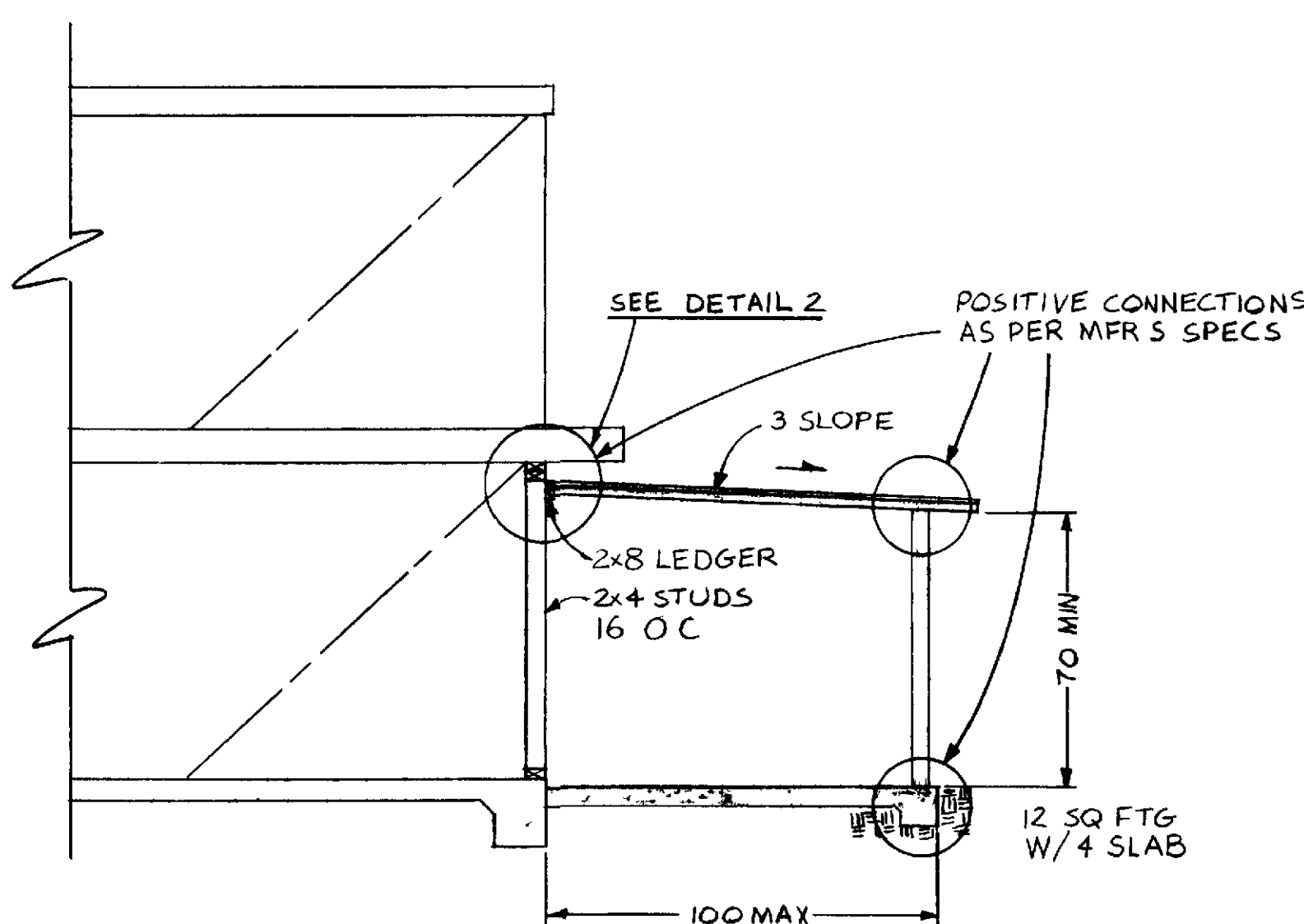
SECTION P-46A  
SCALE 1/4" = 10'



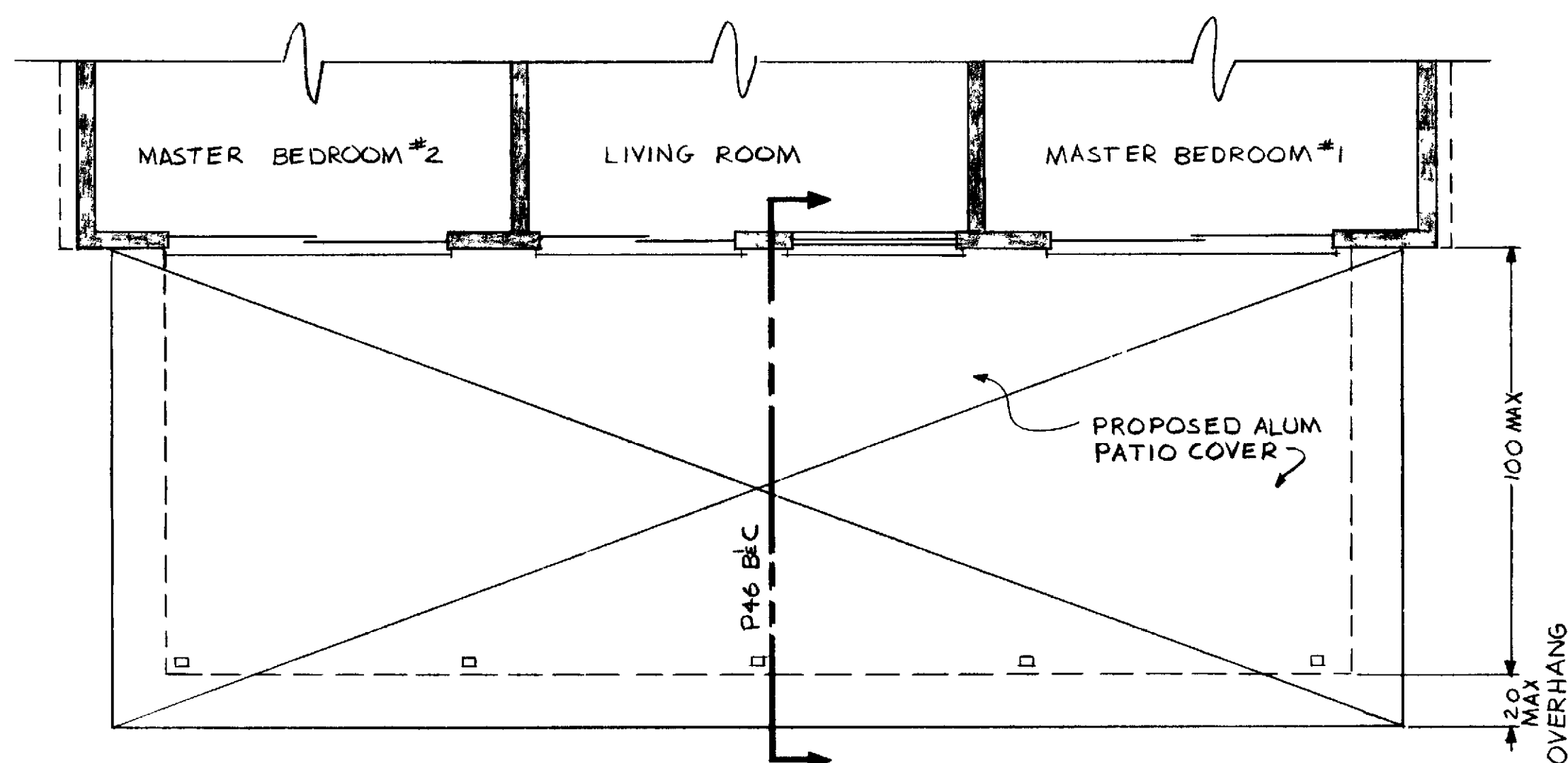
PARTIAL FLOOR PLAN PLAN 46A  
SCALE 1/4" = 10'



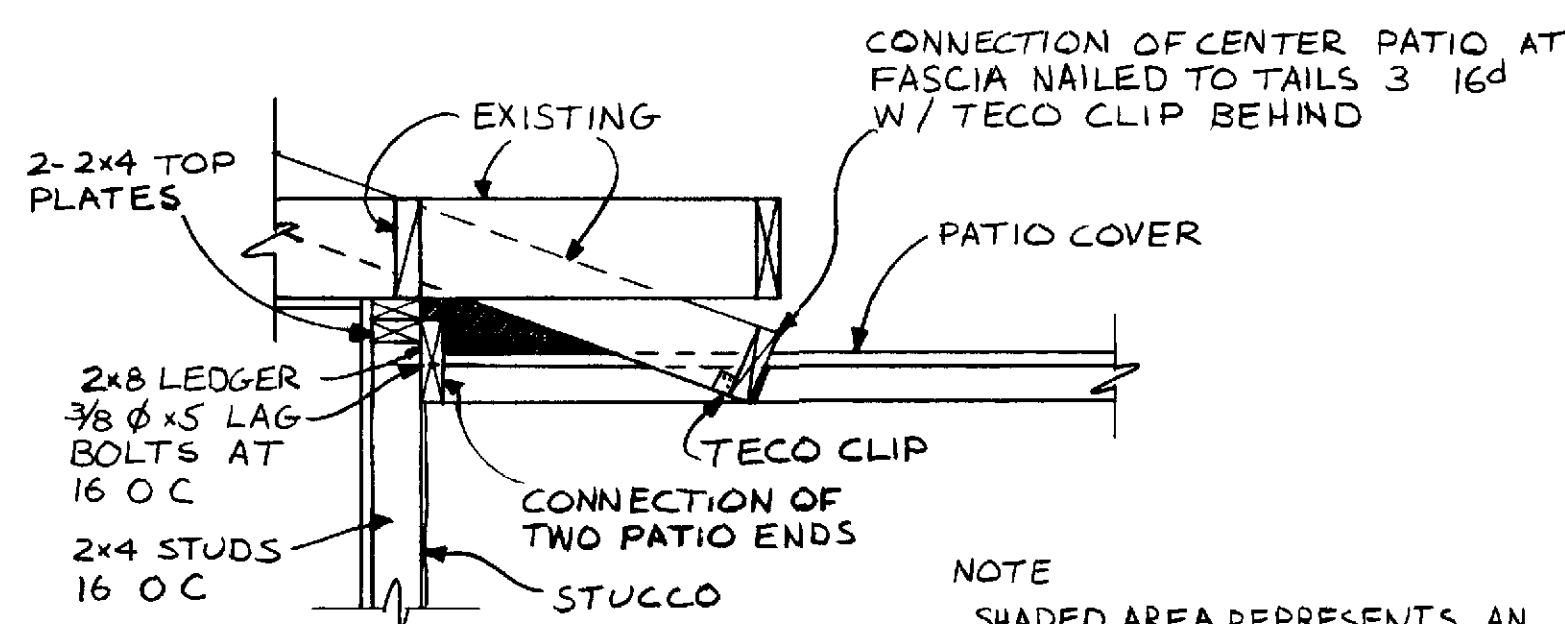
REAR ELEVATION PLAN 46 B<sup>1/2</sup> C  
SCALE 1/4" = 10'



SECTION P-46 B<sup>1/2</sup> C  
SCALE 1/4" = 10'

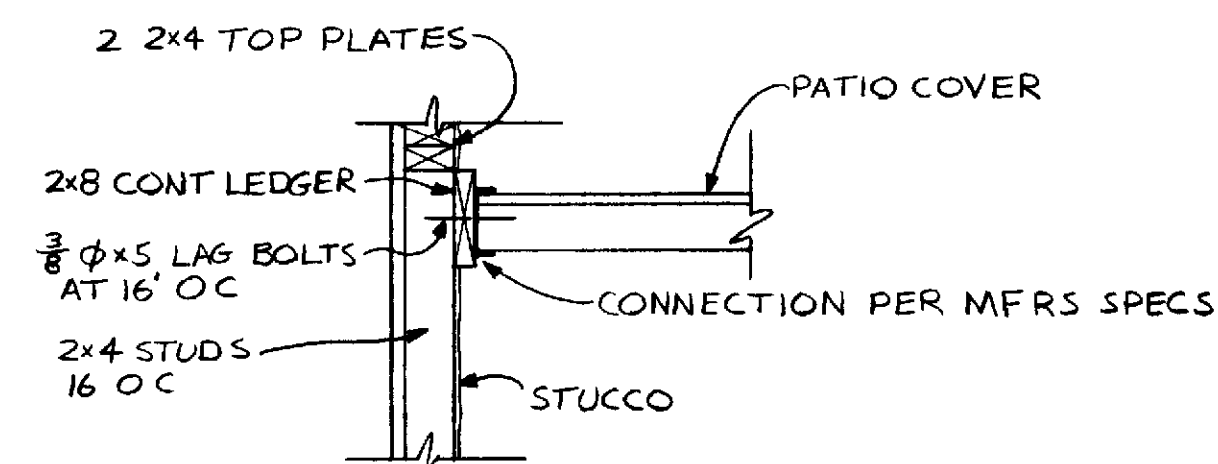


PARTIAL FLOOR PLAN PLAN 46 B<sup>1/2</sup> C  
SCALE 1/4" = 10'



DETAIL #1  
SCALE 3/4" = 10'

NOTE  
SHADED AREA REPRESENTS AN OPENING BETWEEN RAFTER TAIL AND TOP OF COVER. THIS AREA MUST BE COVERED TO ASSURE A WATER-PROOF COVER.



DETAIL #2  
SCALE 3/4" = 10'

NOTES

- 1 DIMENSIONS HAVE PREFERENCE OVER SCALE
- 2 CONTRACTOR SHALL VERIFY ALL DIMENSIONS AND CONDITIONS AT EACH JOB SITE
- 3 ALL PHASES OF CONSTRUCTION SHALL COMPLY WITH CURRENT ED OF THE UBC AND/OR STATE AND LOCAL CODES
- 4 CONTRACTOR SHALL SECURE & PAY FOR ALL PERMITS REQ'D BY PCM INC & THE OC BLDG DEPT
- 5 UPON COMPLETION CONTRACTOR SHALL REMOVE ALL DEBRIS & LEAVE ALL AREAS BROOM-CLEAN
- 6 PATIO COVER SUPPORTING MEMBERS GUTTER & DOWNSPOUT SHALL BE ALUM W/BAKED ENAMEL FINISH
- 7 PATIO COVER MFR SHALL FURNISH BLDG OFFICIALS W/CALCS & SHOP DRAWINGS SIGNED BY A CIVIL OR STRUCTURAL ENGINEER. CALCS MUST CONSIDER BOTH VERTICAL LOADING & LATERAL RESISTANCE
- 8 CONC TO BE 2000 PSI AT 28 DAYS
- 9 IF AIR CONDITIONER IS AFFECTED AND MUST BE RELOCATED THE CONTRACTOR IS RESPONSIBLE FOR PROVIDING THE REMOVAL AND REINSTALLATION THERE OF
- 10 CONCRETE THAT WILL BE EXPOSED TO SOIL CONTAINING SULFATE CONCENTRATIONS OF MORE THAN 0.2% SHALL BE MADE WITH TYPE I CEMENT

(73-451)

ALUMINUM PATIO COVER (REAR)  
NAVARRO P-46 & P 46R AB & C  
CASA ROSA RP-46 A&B

LEISURE WORLD  
STANDARD PLAN  
NUMBER 209 **209**

PCM INC  
REDRAWN BY CHRIS MANGELS  
APPROVED BY \_\_\_\_\_

PCM INC 380-4616  
PO BOX 2220 LAGUNA HILLS

DRAWN MAY 29 1974  
REDRAWN MAY 13 1986