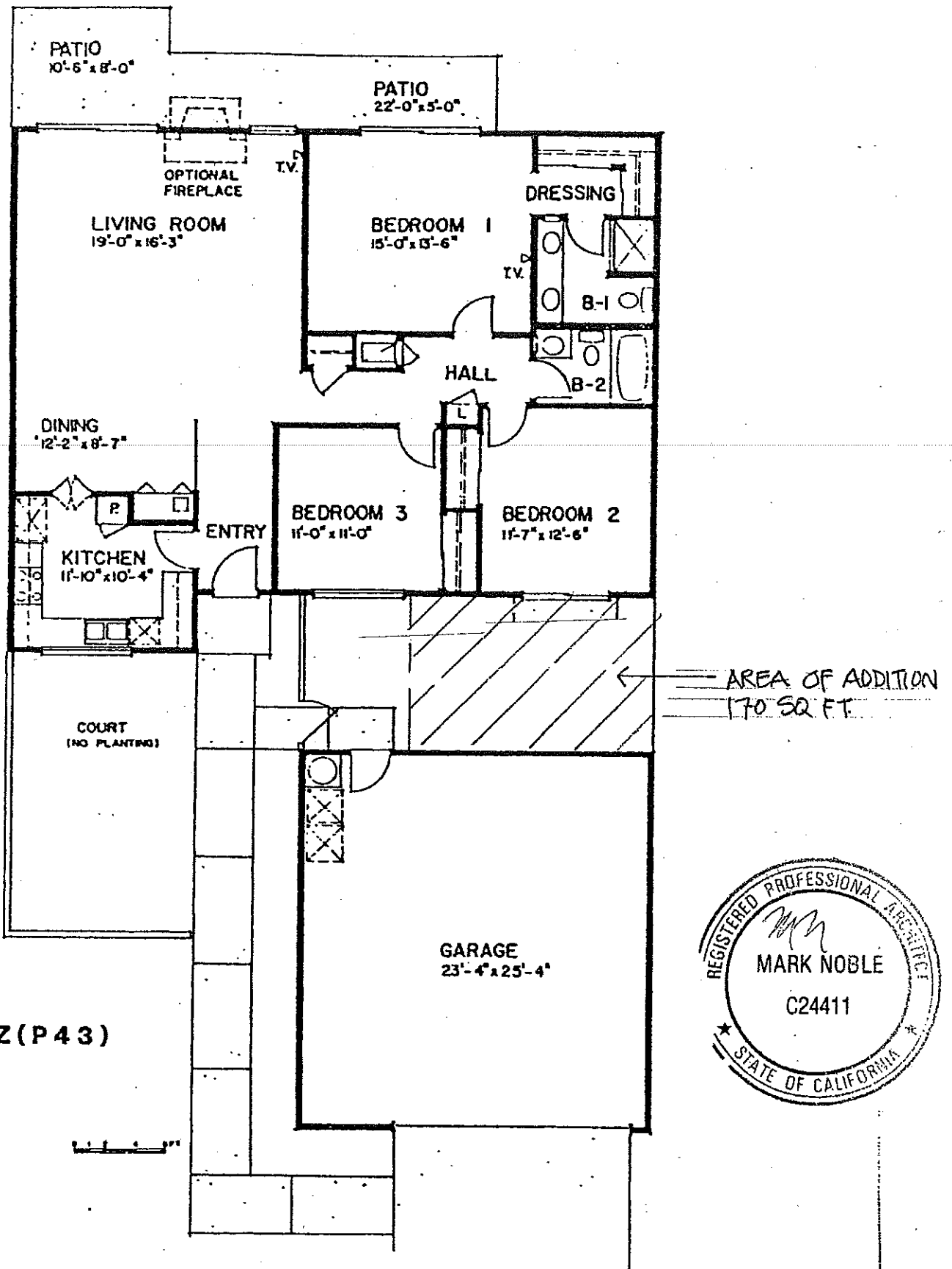


1 of 8

Standard Plan #300  
Bedroom Extension  
Laguna Woods, CA



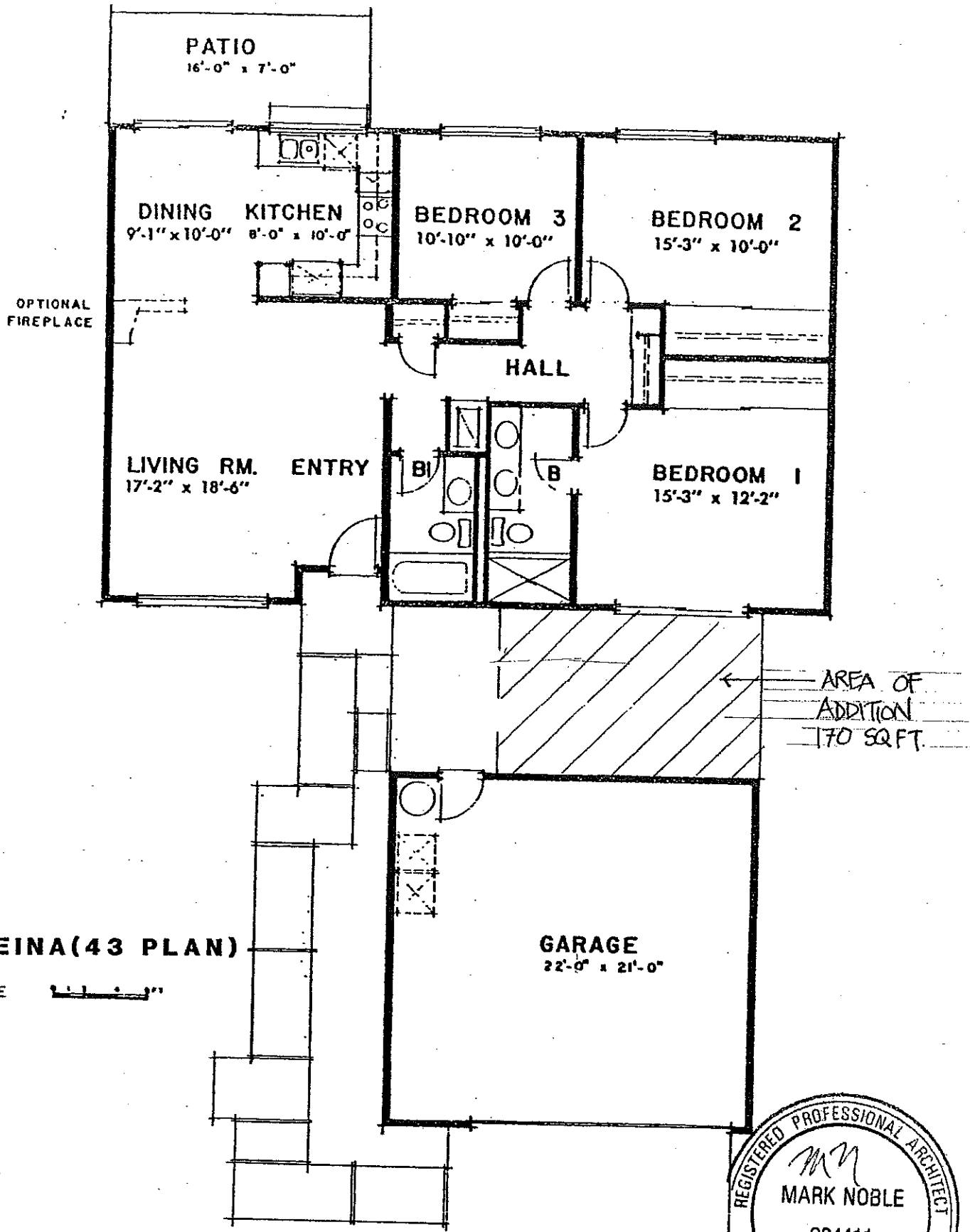
Mark Noble  
26392 Via Gaviota  
Mission Viejo, CA  
(949) 951-8159



ANDALUZ (P43)

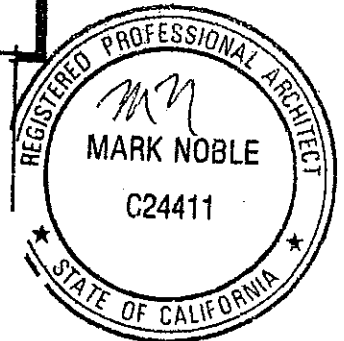
SCALE

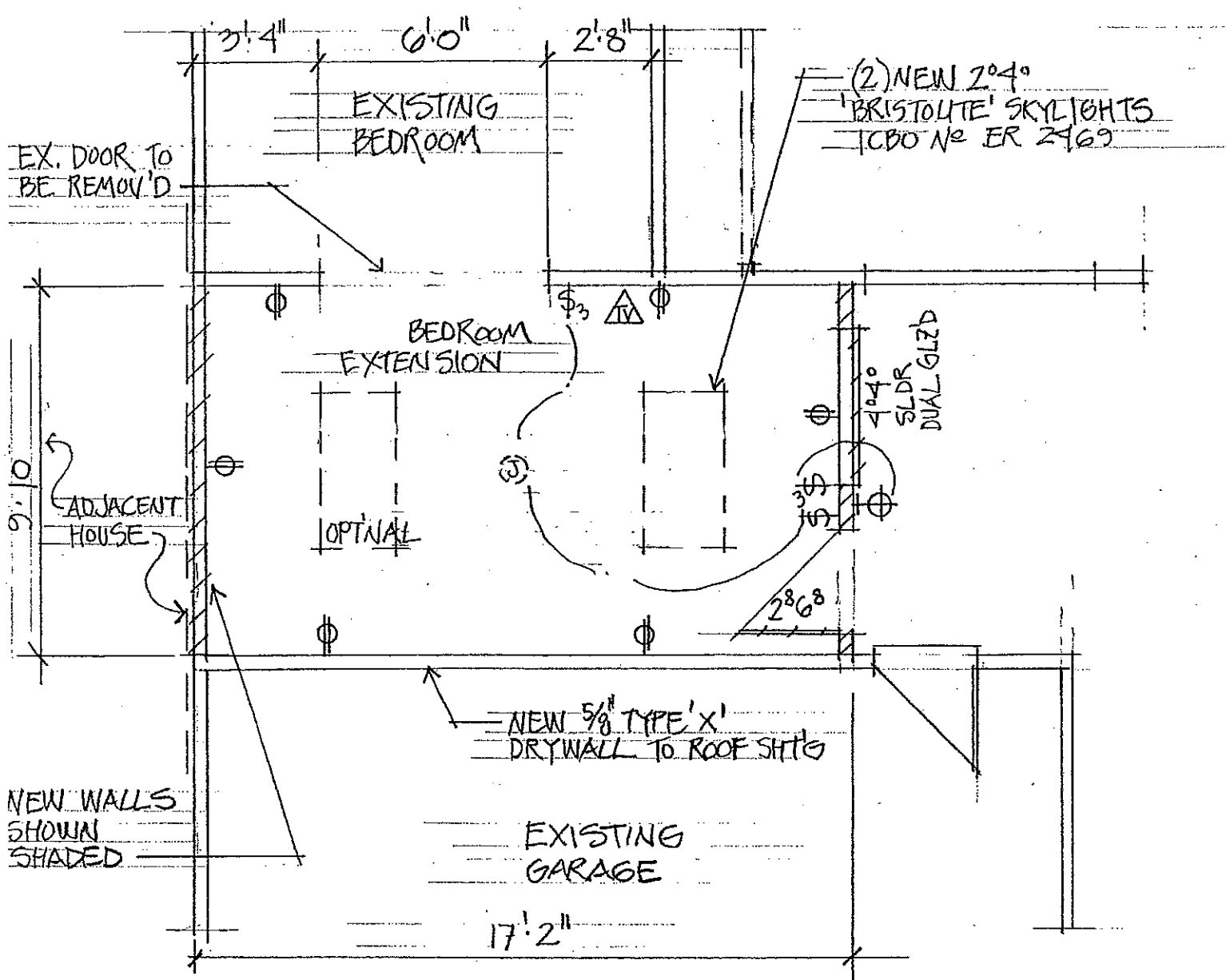




**LA REINA (43 PLAN)**

SCALE 1/4" = 1'-0"

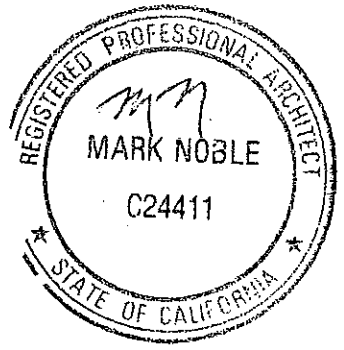


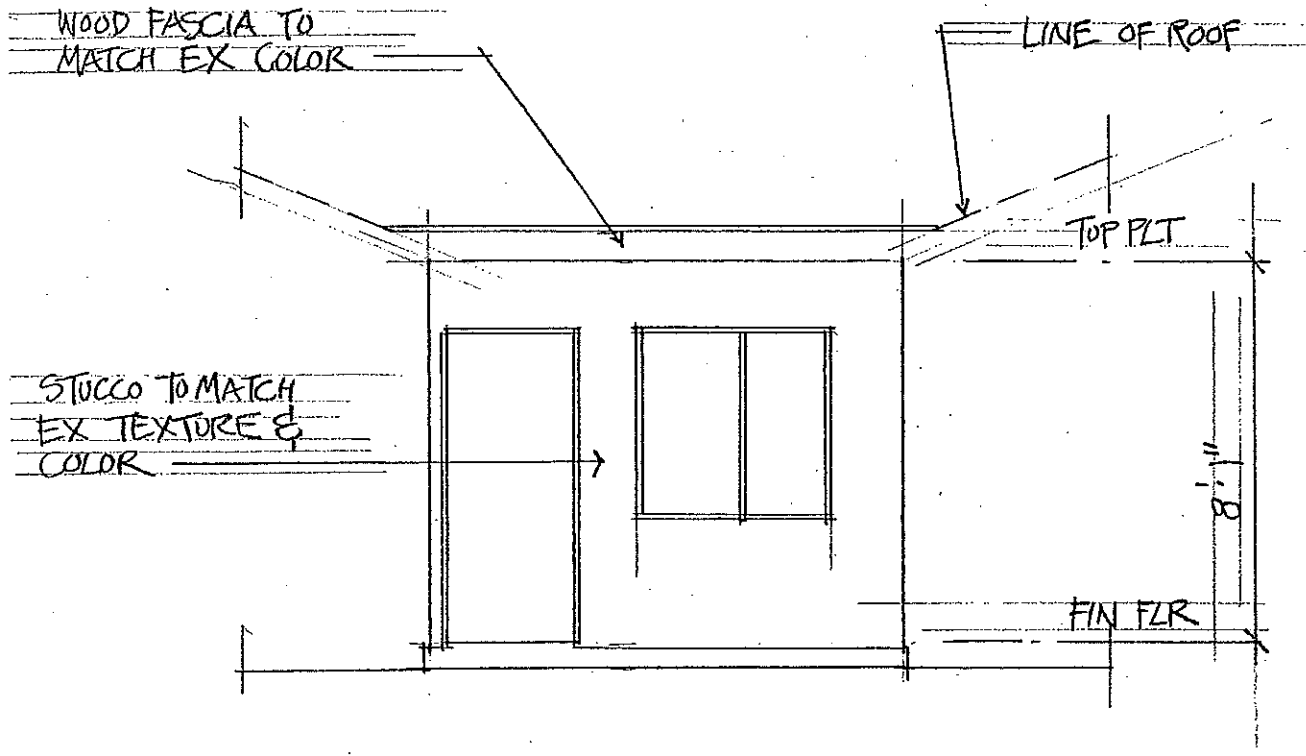


FLOOR PLAN

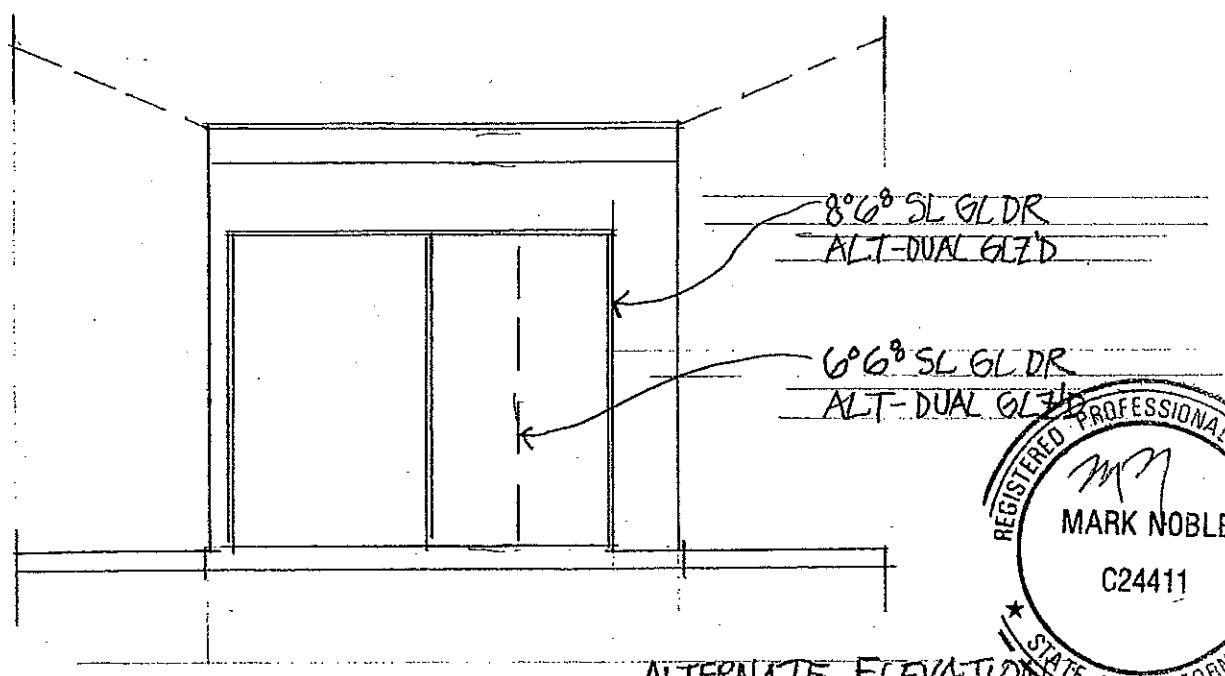
MATERIAL SPECS

- WOOD - DOUG FIR LARCH  
4x - No 2,  $F_b = 875$ ,  $E = 1.6 \times 10^6$
- CONCRETE - 2000 PSI @ 28 DAYS
- ALL SILLS - PRESSUR TREATED DOUG FIR (PTDF)
- STUCCO - 3 COAT OVER 15 # BUILD'G PAPER
- DRYWALL - 1/2" DRYWALL

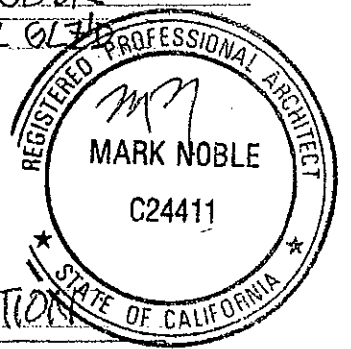


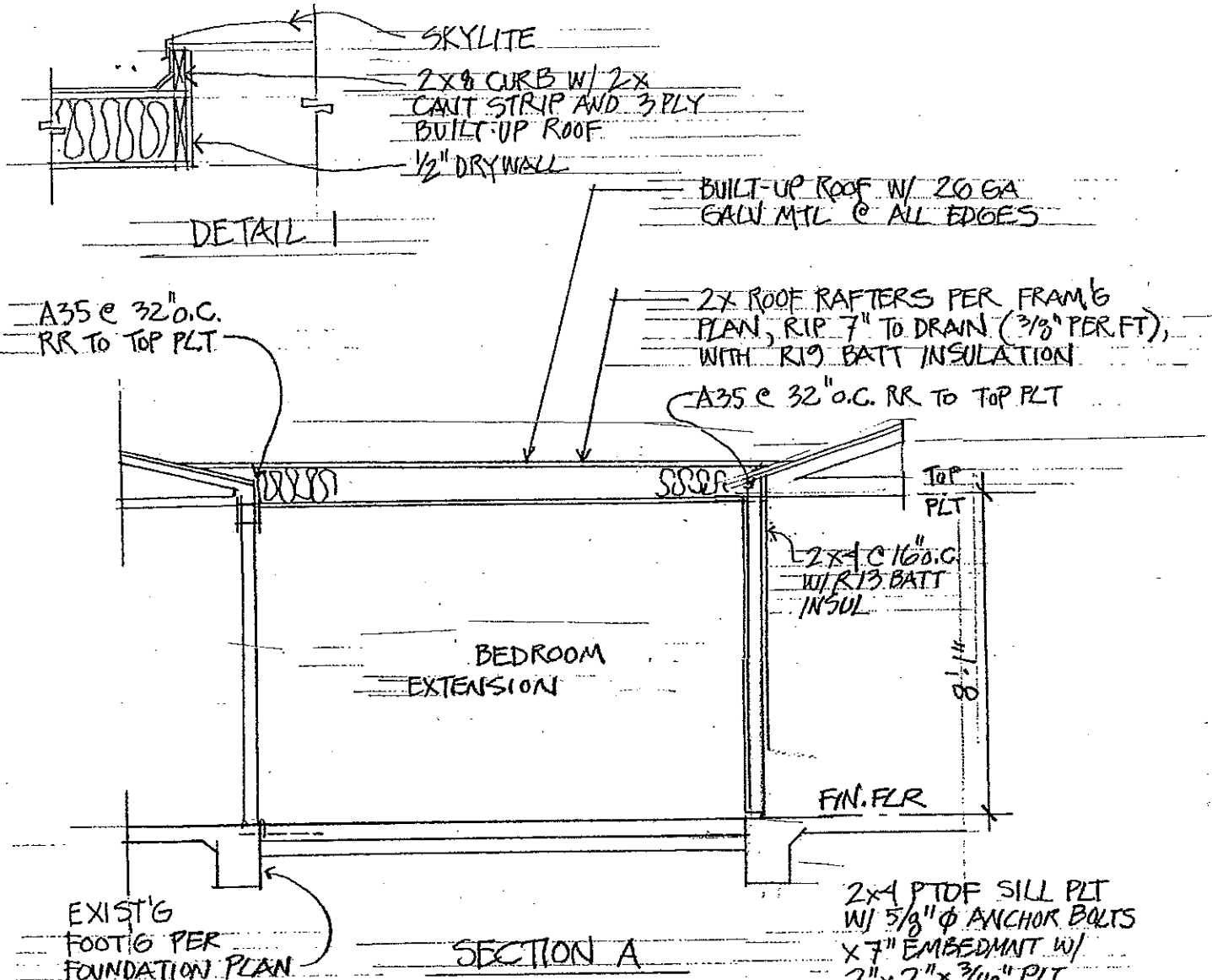


PARTIAL ELEVATION

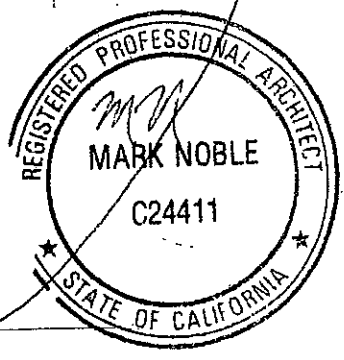
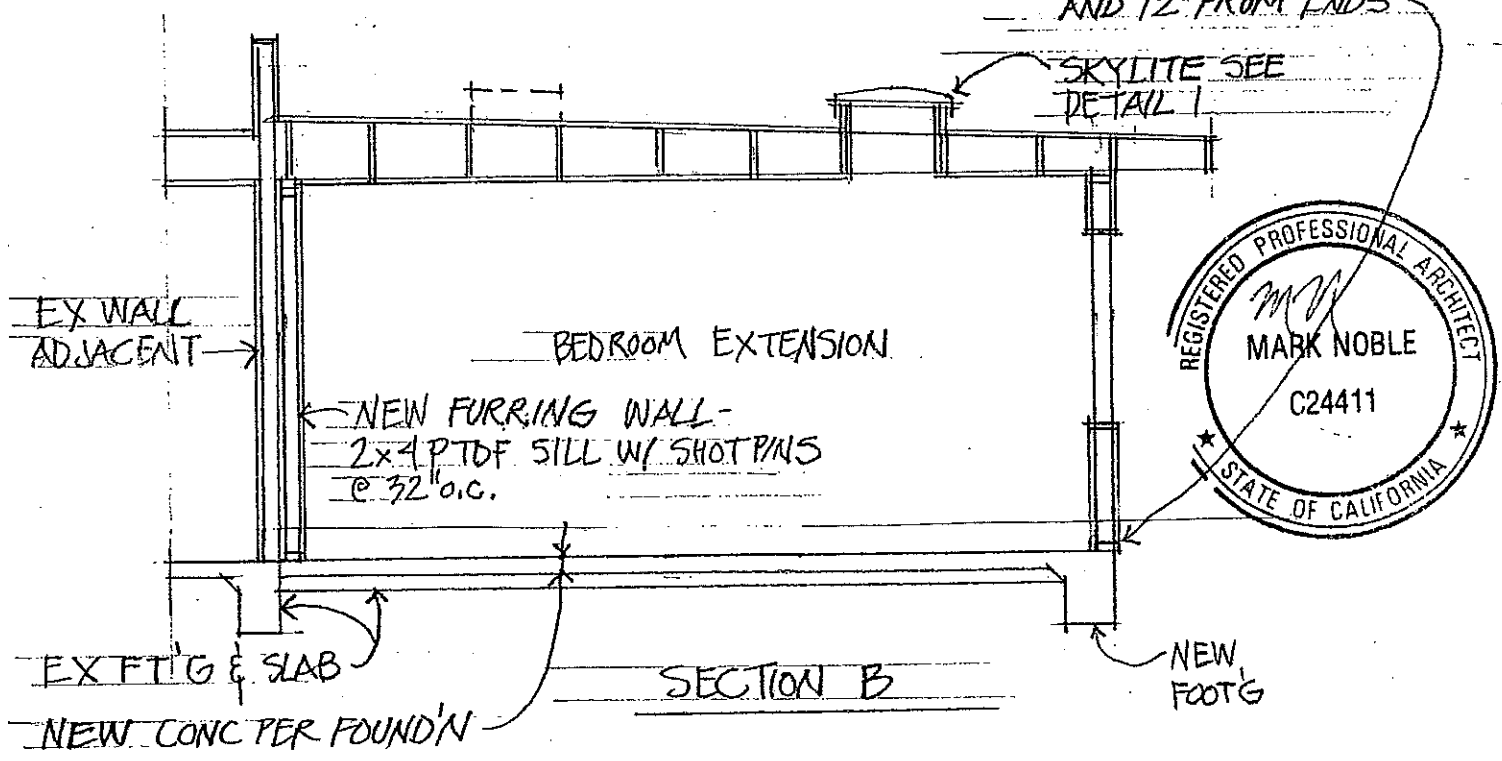


ALTERNATE ELEVATION



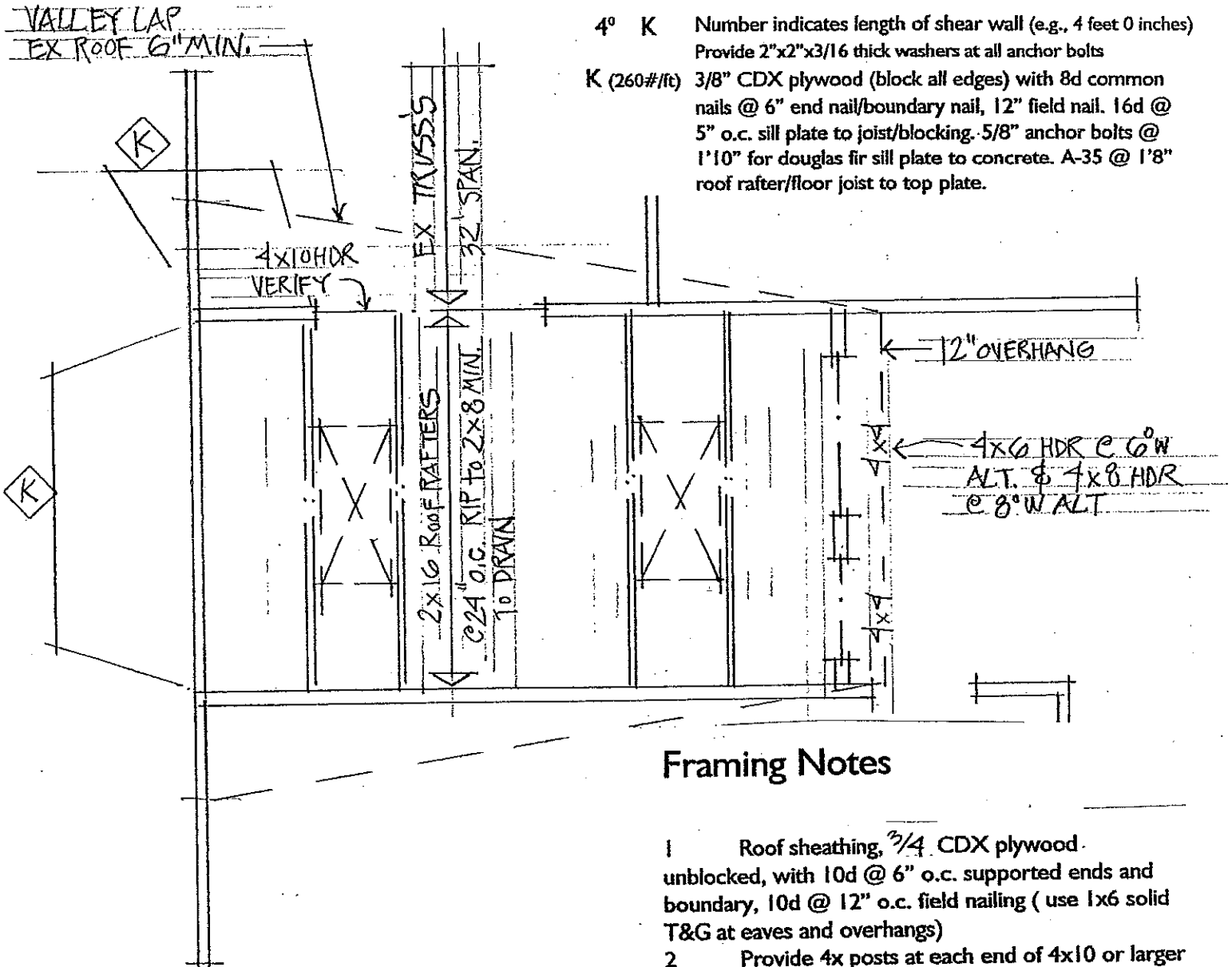


2x4 PTDF SILL PLT W/ 5/8" φ ANCHOR BOLTS X 7" EMBEDMENT W/ 2" x 2" x 3/16" PLT WASHERS @ 6" O.C. AND 12" FROM ENDS



# Shear Wall Schedule (1997 UBC)

- 4° K Number indicates length of shear wall (e.g., 4 feet 0 inches)  
Provide 2"x2"x3/16 thick washers at all anchor bolts
- K (260#/ft) 3/8" CDX plywood (block all edges) with 8d common nails @ 6" end nail/boundary nail, 12" field nail. 16d @ 5" o.c. sill plate to joist/blocking. 5/8" anchor bolts @ 1'10" for douglas fir sill plate to concrete. A-35 @ 1'8" roof rafter/floor joist to top plate.



## Framing Notes

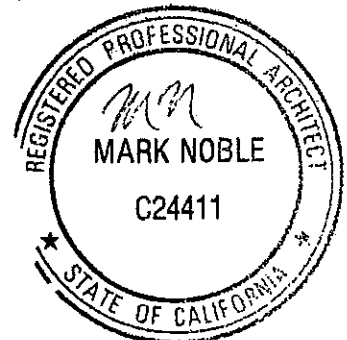
- 1 Roof sheathing, 3/4 CDX plywood. unblocked, with 10d @ 6" o.c. supported ends and boundary, 10d @ 12" o.c. field nailing (use 1x6 solid T&G at eaves and overhangs)
- 2 Provide 4x posts at each end of 4x10 or larger members, double studs for 4x8 single stud for 4x6 or smaller members

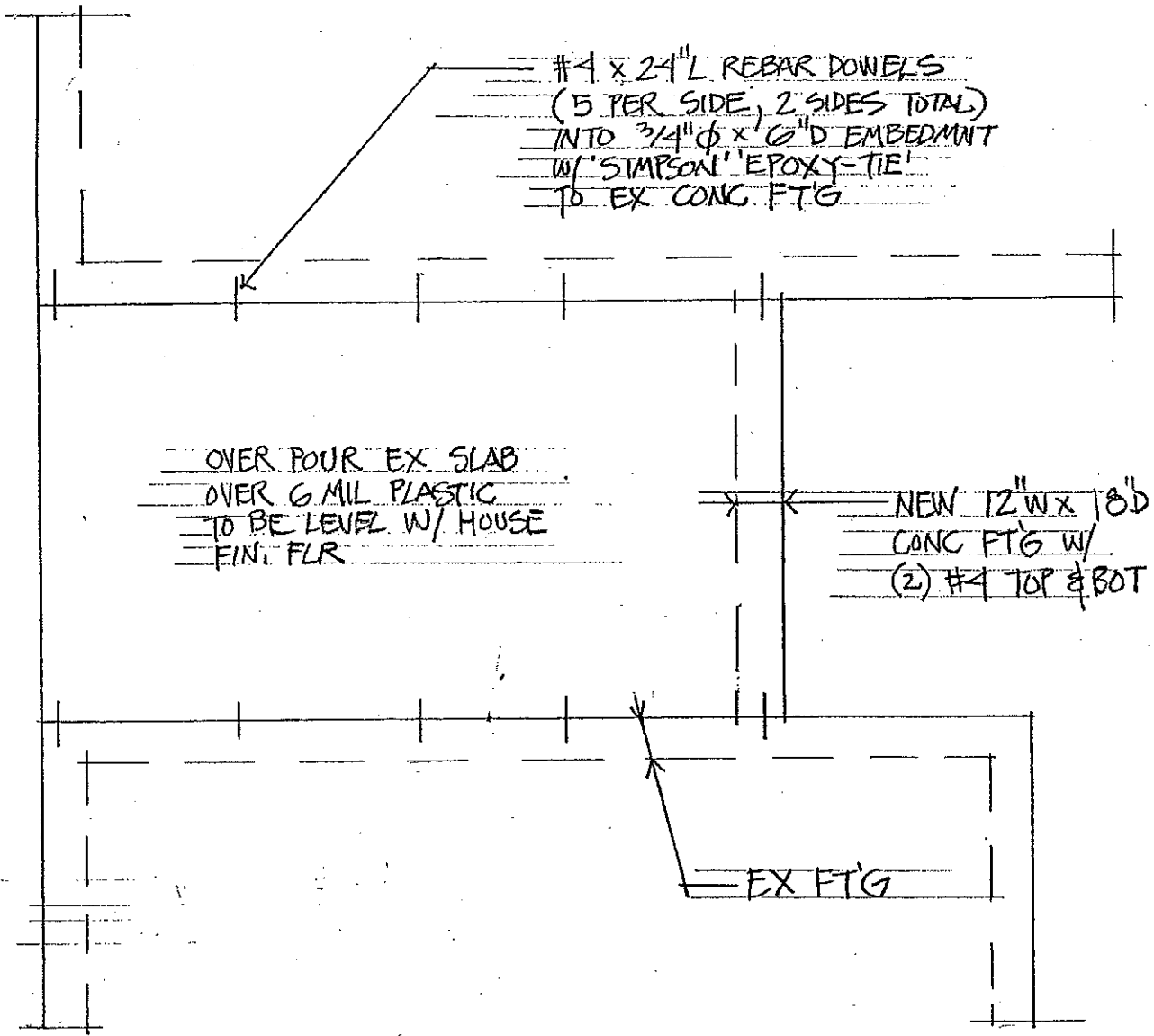
## STRUCTURAL CALCS

HDR:  
 $W = 35 \left( \frac{32}{2} + \frac{10}{2} \right) = 735 \frac{\#}{F}$   
 $L=6 \quad M=3.3 \quad S=36.4 \quad I=44.5 \rightarrow 4 \times 10$

ROOF RAFTERS  
 $2 \times 8 \text{ e24" o.c. } S=13.1 \quad I=47.6$   
 $W = 35(2 \cdot 6) = 70$   
 $l_b = \sqrt{\frac{13.1 \cdot (1006) \cdot 1.25}{1.5(70)}} = 12.5 \rightarrow 2 \times 8 \text{ e24" o.c. MAX SPAN } 12'0"$   
 $l_d = \sqrt[3]{\frac{47.6 \cdot (3556)}{70}} = 13.4$

## FRAMING PLAN





FOUNDATION PLAN

