



STANDARD 5A: SATELLITE DISHES: ONE- STORY BUILDINGS

ADOPTED NOVEMBER 2006, RESOLUTION 03-06-57

REVISED APRIL 2007, RESOLUTION 03-07-31

GENERAL REQUIREMENTS REVISED APRIL 2011, RESOLUTION 03-11-49

REVISED NOVEMBER 2013, RESOLUTION 03-13-119

GENERAL REQUIREMENTS REVISED JANUARY 2018, RESOLUTION 03-18-12

REVISED JUNE 2018, RESOLUTION 03-18-86

1.0 GENERAL GUIDELINES

SEE STANDARD SECTION 1: GENERAL REQUIREMENTS

2.0 GENERAL GUIDELINES

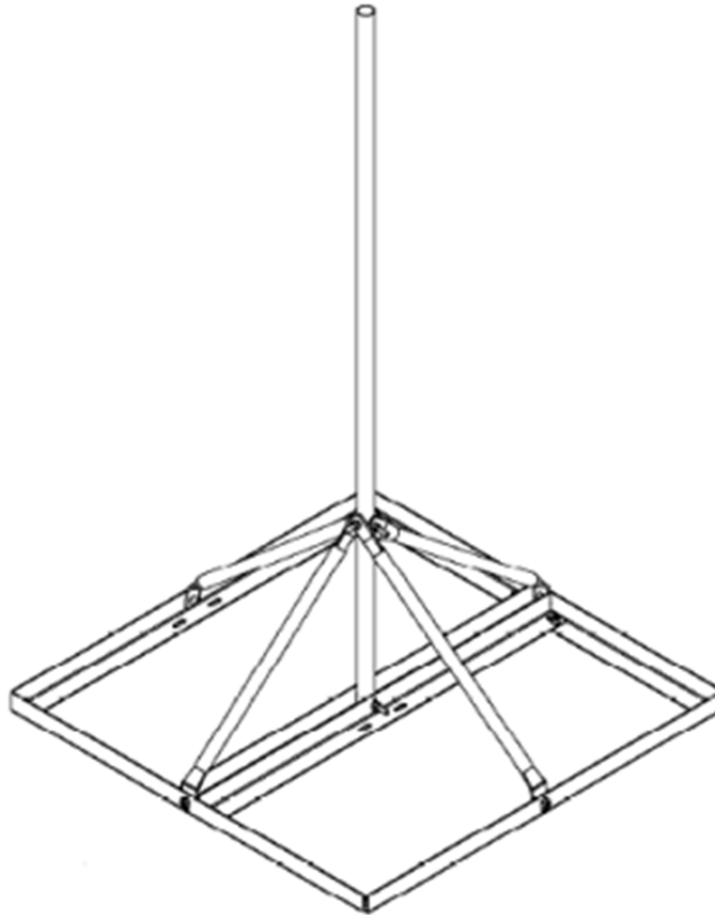
- 2.1** Any installation permitted in Mutual Common Area at one story buildings must follow all guidelines set forth by the following Mutual Alteration Standard.
- 2.2** Prior to installation of any satellite dish, a plan and the specifications of all proposed work and equipment must be submitted for approval as specified in Section 1.5. The submitted plan must indicate all work to be done, i.e., type of dish, size, a full description, it's location on the building, anchoring, and method of sealing wall(s) and attachments. Site location will be contingent upon Mutual approval.
- 2.3** The Mutual Member assumes all responsibility for any damage including, but not limited to, roof or wall damage, or damage from moisture intrusion resulting from improper installation of the satellite dish.
- 2.4** No satellite dish will be permitted which may become hazardous to other residents or workmen due to its location or dimensions.
- 2.5** Any satellite dish must be made easily removable as required for performance of maintenance. In the event a satellite dish must be removed it must be the Mutual Member's responsibility to remove and properly store the dish until such time that maintenance work has been completed. The cost of removal, storage and re-installation must be borne by the Mutual Member.

- 2.6 Any satellite dish installation must follow all guidelines set forth by the Federal Communications Commission's Over-the-Air-Reception-Devices rule (OTARD).
- 2.7 Any installation violating these guidelines is subject to immediate removal at the sole cost of the Mutual Member, and the restoration of any Mutual property, at the Member's expense.
- 2.8 Should the proposed location of a satellite dish be in an area that is technically Common Area, e.g., the roof, then the applicant is required to execute and submit to Third Laguna Hills Mutual, prior to installation of a dish, the "Agreement Regarding Satellite Dish Installation on Common Area Property".
- 2.9 If the proposed location of a satellite dish be in a location that is currently occupied by a functional solar panel, an alternate location will be designated by the Alteration Department.
- 2.10 All satellite dish installations must be removed at the time of sale.

3.0 INSTALLATION GUIDELINES

- 3.1 Satellite dish installation is permitted on Exclusive Use Common Area, i.e., patio, atrium or courtyard. The dish must stay within the footprint of such areas.
- 3.2 Satellite dish installation is permitted on building fascias.. The Member must coordinate with and receive approval from the Alterations Department for all satellite dish locations. All satellite dish installations must not be visible from neighboring street(s). Satellite dishes must be installed no less than twenty (20) feet from the corner of the building closest to the street, and cannot be attached on a side of the building that faces the street.
- 3.3 For satellite dish installations on building fascias of detached manors, the mounting bracket must be clamp style and must fully fit onto the fascia, with no overhang.
- 3.4 Satellite dish installation is permitted on **flat roofs** when the location does not interfere with the overall visual continuity of the manor and/or surrounding area. No satellite dish or any portion of a satellite dish and its related Members must be attached to any built-up roofing on a flat roof. See 2.2 for installation criteria.
- 3.5 To install a dish on a **flat roof**, mount the satellite dish on a non-penetrating satellite dish roof-mount weighted down by a minimum of four 8" x 8" x 16" concrete blocks (see Example 1 below).

- 3.6 For installation of a satellite dish onto a **flat PVC cool roof**, the member must install a 3' X 3' satellite dish pad provided by the Mutual's roofing contractor at the expense of the Member.
- 3.7 Only one (1) satellite dish per manor is allowed.
- 3.8 Any satellite dish installed on Common Area must not exceed a diameter of 36".
- 3.9 No coaxial cable must be larger than ½" in diameter.
- 3.10 Fasteners must be properly sealed to prevent moisture intrusion. Sealants must be specifically manufactured for the application for which it is used.
- 3.11 Drilling through a roof is prohibited.
- 3.12 Mounting a satellite dish on a chimney is prohibited.
- 3.13 Utilization of any GRF Broadband installation and/or equipment is prohibited.
- 3.14 Mounting of a satellite dish to PVC, ABS, or plumbing vent pipes is prohibited.
- 3.15 No modifications to any fascia, rain gutter or plumbing vent must be permitted. A satellite dish installation must not obstruct a rain gutter or plumbing vent in any way.
- 3.16 Satellite dishes and installation materials must be grounded in accordance with the National Electric Code.



Example 1: Non-Penetrating Satellite Dish Roof Mount